



MG-SOFT Corporation

Solutions for all your SNMP needs!



A Brief Introduction of MG-SOFT's SNMP Network Management Products

Document Version 1.3, published in June, 2008

MG-SOFT's SNMP Products Overview

- **SNMP Management Products**

- MIB Browser Pro. for Windows and Linux,
- Trap Ringer Pro. for Windows, Linux and Mac OS X,
- SNMP MIB Query Manager for Windows,
- Net Inspector for Windows and Linux,
- SNMP Master Agent for Windows.

- **SMI and MIB products**

- Visual MIB Builder for Windows,
- MIB Explorer for Windows,
- MIB Compiler for Windows, Linux and Mac OS X.

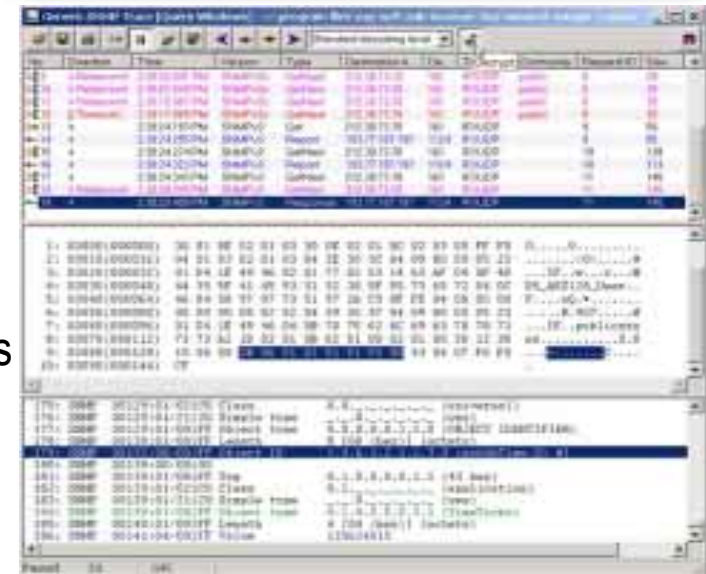
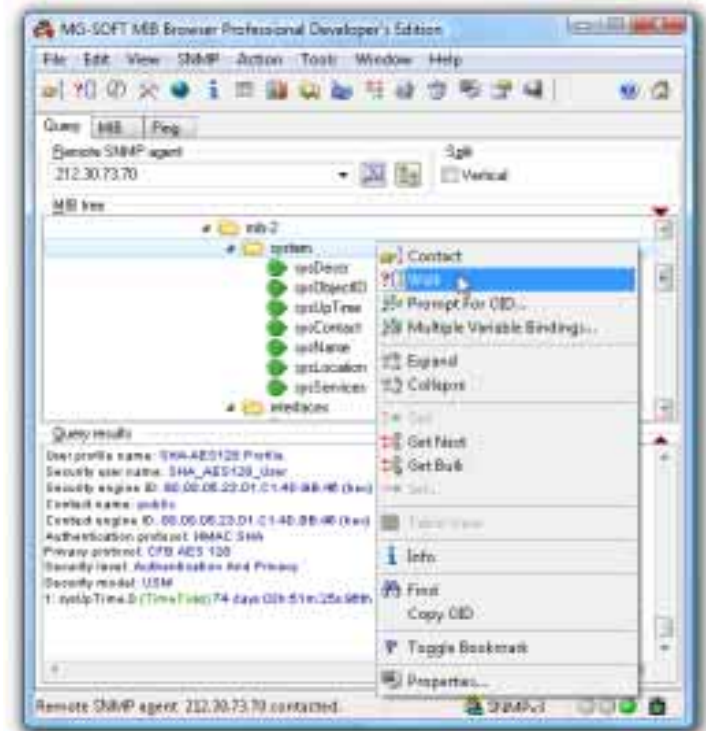
- **Development toolkits**

- SNMP Software Development Lab for Windows, Linux and Mac OS X (WinSNMP, WinMIB and EasyAgent SDKs),
- SNMP Agent Design and Deployment Kit for Windows,
- EasyAgent Source Code Template Generator for Windows, ...

All MG-SOFT's SNMP products support SNMPv1, SNMPv2c and SNMPv3 protocols over IPv4, IPv6 and IPX networks. Besides the full SNMPv3 USM support, they implement also 128-bit CFB AES encryption and DOCSIS/DH key ignition.

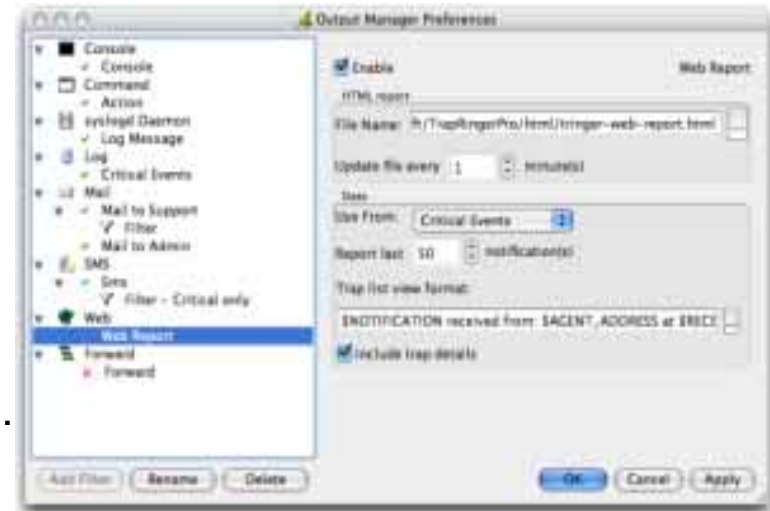
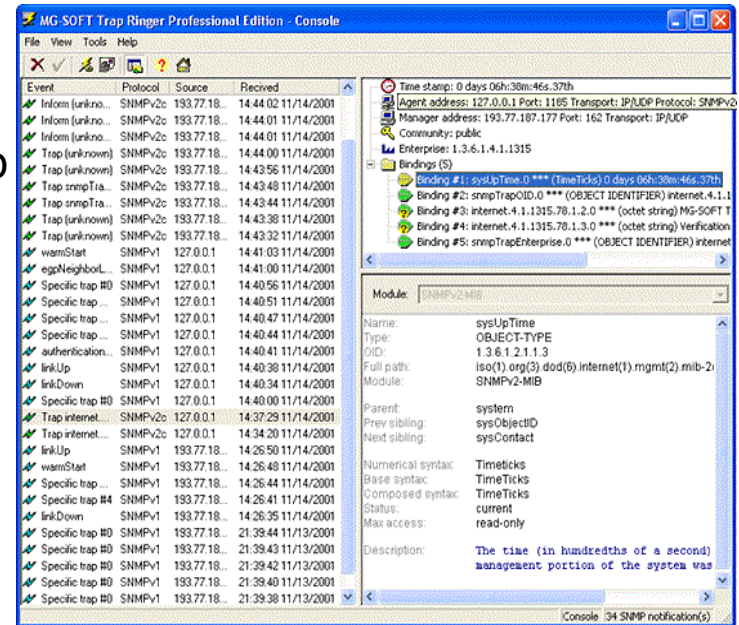
MIB Browser Pro.

- Available for Windows and Linux platforms.
- Modern, easy-to-use, user friendly and intuitive GUI lets you monitor and manage any SNMP device on the network.
- Support for SNMPv1, SNMPv2c and SNMPv3 protocols (full USM support as well as 128-bit CFB_AES privacy, DOCSIS/DH key ignition) over IPv4, IPv6 and IPX networks.
- Support for SNMP GET, GETNEXT, GETBULK and SET operations.
- Receives (also sends) and displays SNMP Trap and Inform notifications.
- Loads private MIB definitions (incl. MIB Compiler).
- Advanced features:
SNMP discovery, SNMP table viewer including powerful functions like row creation, ICMP-PING, logging capabilities and export to Microsoft Excel files, real-time graphing of numeric OID values, comparing SNMP agents, raw and decoded view of sent and received SNMP packets, etc.



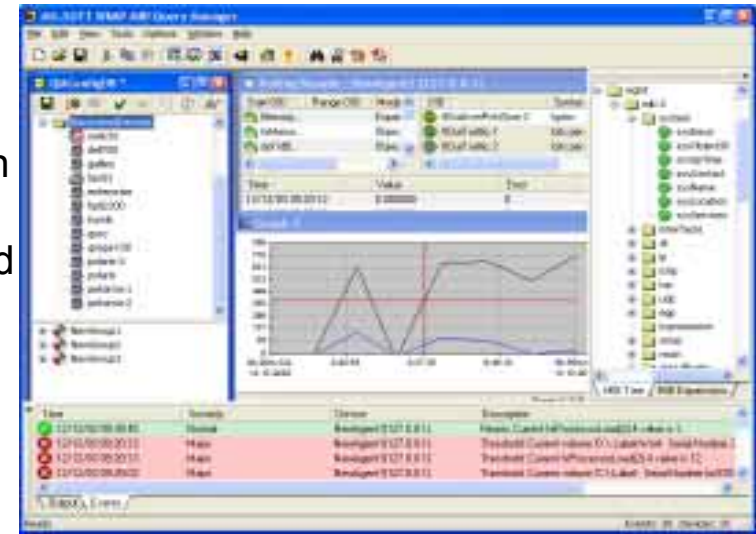
Trap Ringer Pro.

- Available for Windows, Linux and Mac OS X.
- Extreme performance (receives and processes up to 2000 notifications per second).
- Receives and displays SNMPv1, SNMPv2c in SNMPv3 (HMAC-SHA, HMAC-MD5, CBC-DES, CFB-AES-128) Trap and Inform notifications in real-time, over IPv4, IPv6 and IPX networks.
- Trap receiving module runs as a system service (on Windows) or daemon (on Linux, Mac).
- Advanced filtering capabilities. Generate filters from received SNMP notifications.
- Supports assigning severity levels and colors to SNMP notifications.
- Various ways for processing received notifications: forwards notifications via SNMP, E-mail and SMS messages, generates HTML reports, logs SNMP notifications to arbitrary log files and to Windows and Unix system log files, triggers arbitrary commands on specified events.



SNMP MIB Query Manager

- Available for Windows platforms.
- Supports continuous monitoring of numerous SNMP devices (incl. dedicated support for RMON probes) on networks.
- Integrated polling Configuration Wizard with advanced device discovery mechanisms.
- Supports monitoring arbitrary OIDs and MIB expressions on remote SNMP devices.
- Detects, logs and displays all significant network events based on built-in Threshold/Rearm/Value change values.
- Supports notifying users about network events (via E-mail, by playing audible alarms or by running external programs).
- Built-in support for monitoring the status, response latency, packet loss, network interface statistics as well as system resource utilization rates (CPU, memory, disk) on devices that return this information.
- Stores polling data and network event to MS Access or MS SQL Server database.
- Generates HTML report files that enable full-featured Web-based monitoring of your network.
- Graphical monitoring of numerical OID values.



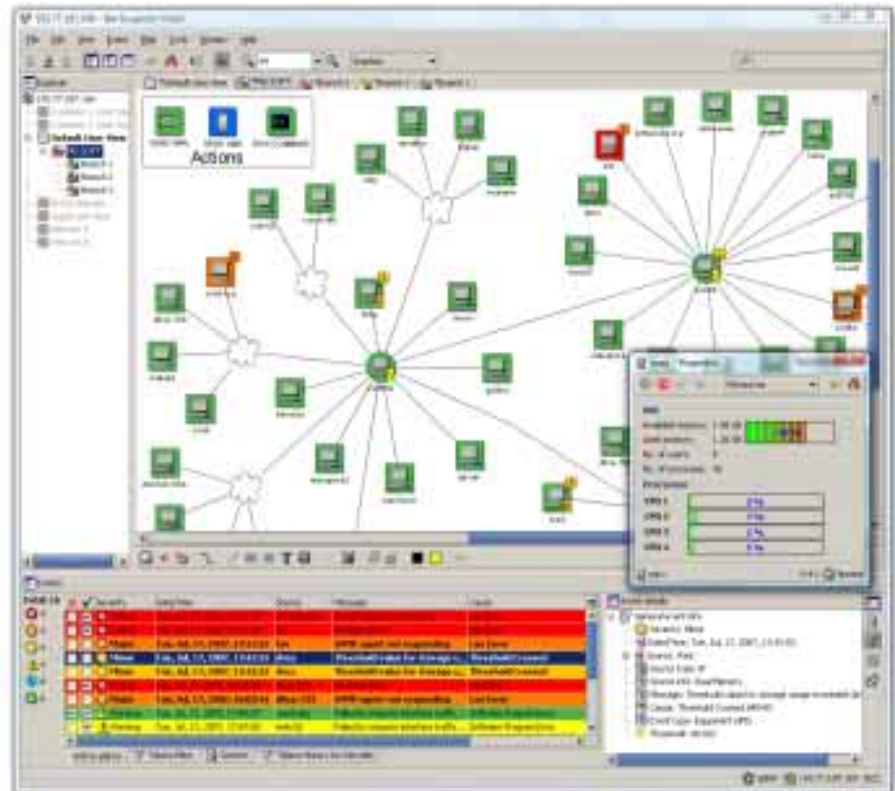
MG-SOFT SNMP MIB Query Manager 4.0
HTML Report

[20 latest events](#) [Devices](#) [Problem devices](#) [Problem interfaces](#) [Problem storages](#) [Events](#)

20 Latest Events	Devices	Status	Custom reports	Problem Devices
✖ jasnar : Threshold: Current #PacketLoss' value is 40.	switch	Up		switch : One of more interfaces are down.
✔ jasnar : Device is responding again.	kasiopea	Up		IP_193.77.187.3 : is down.
✖ IP_193.77.187.7 : Interface 'Trunk 2 on Unit 1'(182) is down.	IP_193.77.187.3	Down		IP_193.77.187.7 : One of more interfaces are down.
✖ IP_193.77.187.7 : Interface 'Trunk 1 on Unit 1'(181) is down.	IP_193.77.187.7	Up		jasnar : One or more thresholds occurred.
✖ IP_193.77.187.7 : Interface 'RMON:10/100 Port 24 on Unit 1'(124) is down.	IP_193.77.187.16	Up		SASOZ-OLD : is down.
✖ IP_193.77.187.7 : Interface 'RMON:10/100 Port 23 on Unit 1'(123) is down.	enterprise	Up		neptun : is down.
✖ IP_193.77.187.7 : Interface 'RMON:10/100 Port 22 on Unit 1'(122) is down.	holj2200	Up		MaliPrinc : is down.
✖ IP_193.77.187.7 : Interface 'RMON:10/100 Port 21	pluton-new	Up		Back to top
	pekarna-1	Up		Problem Interfaces
	jasnar	Up		'FastEthernet0/7' on switch is down.
	barish	Up		" on switch is down.
	SASOZ-OLD	Down		'FastEthernet0/9' on switch is down.
	neptun	Down		barcode
	barcode	Up		'FastEthernet0/10' on switch is down.
	kalisto	Up		

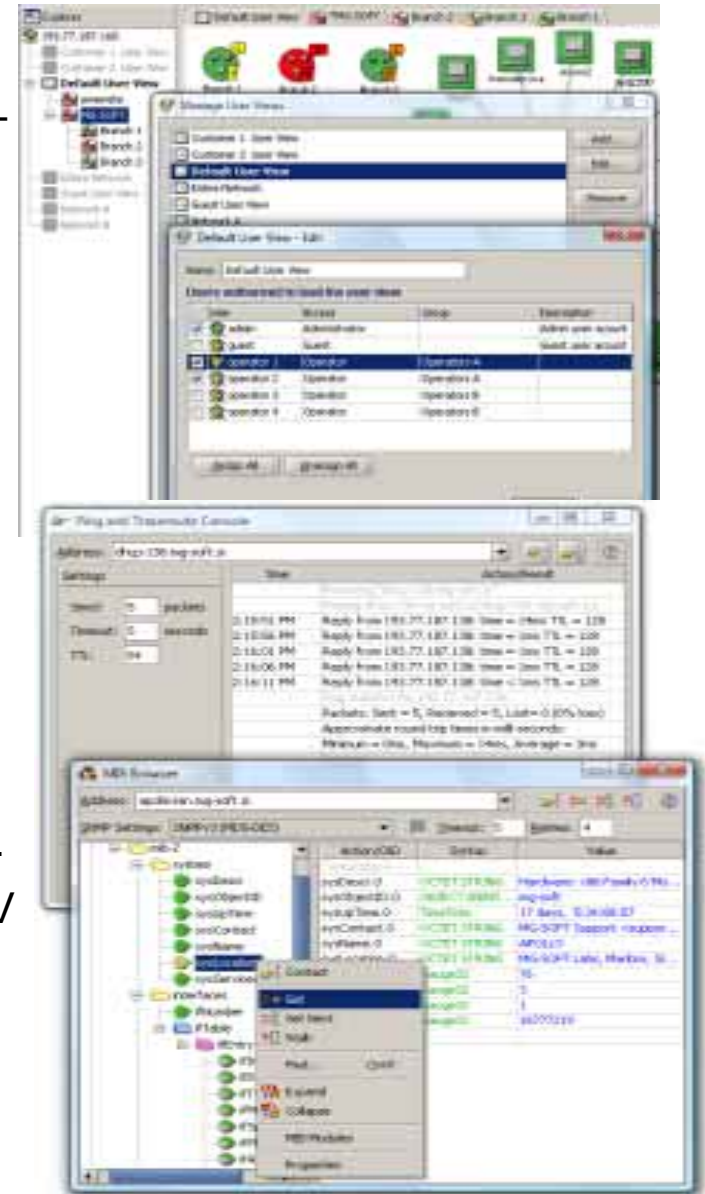
Net Inspector

- Powerful and cost-effective fault management platform (FMP) application.
- Client/Server architecture:
 - Server available for Windows and Linux (RHEL).
 - Client runs on all operating systems with Java Runtime Environment.
- Actively polls devices (Ping, SNMPv1, SNMPv2c, SNMPv3 (security)).
- Receives event report messages (SNMP Trap and Inform).
- Generates alarms – ITU X.733 alarming system (open-clear alarm principle).
- Monitors 20+ well-known network services and user-defined TCP and UDP services.
- Discovery and auto network topology presentation with drill-down capabilities.
- User views as access control mechanism + associated user rights.
- Actions: Mail, SMS, Execute commands.
- Vendor-independent device monitoring, private MIB support (compiler included), private Traps support (trap-to-alarm mapping editor).
- Displaying device status and performance (CPU, memory, storages), network latency



Net Inspector (continued)

- Remarkable performance (concurrent monitoring of 1000s of NE, processes 80 alarms per second (real-time)) .
- Integrated Ping, Traceroute and MIB Browser tools.
- Execute user-defined commands on monitored objects (start node manager SW, Telnet,...).
- Charts displaying device performance counters.
- Easily upgradeable from LITE (max. 64 devices) to WorkGroup (500) to Enterprise Edition (1000) + support for additional Nx1000 devices can be purchased.
- Can pass events and device status data to third-party applications via SNMP Traps or SOAP.
- Can import configuration from configuration management database (CMDB) via HTTP or SOAP.
- Printing and exporting device and alarm data to CSV and HTML files.
- Stores events in SQL database.
- Redundant cluster setup ready,...



SNMP Master Agent for Windows

- Transparent replacement for Microsoft's SNMP Service on all supported Microsoft Windows platforms.
- Adds full SNMPv3 security to Microsoft Windows platforms.
- Supports SNMP over IPv6 on platforms with installed IPv6 protocol stack.
- Loads all extension subagents that used to run under Microsoft's SNMP service.

SNMP Software Development Lab

- Available for Windows, Linux and Mac OS X.
- SNMP Software Development Lab contains:
 - **WinSNMP API** provides a programming interface for network management applications,
 - **WinMIB API** provides a set of database functions that offer to management applications a method of accessing the compiled MIB database,
 - **SNMP EasyAgent framework** provides a convenient way to add SNMP manageability to any application,
 - **MIB Compiler.**